

# ESI TimeLine™

*for ESI Presence Management*

## Gives “time management” a whole new meaning.

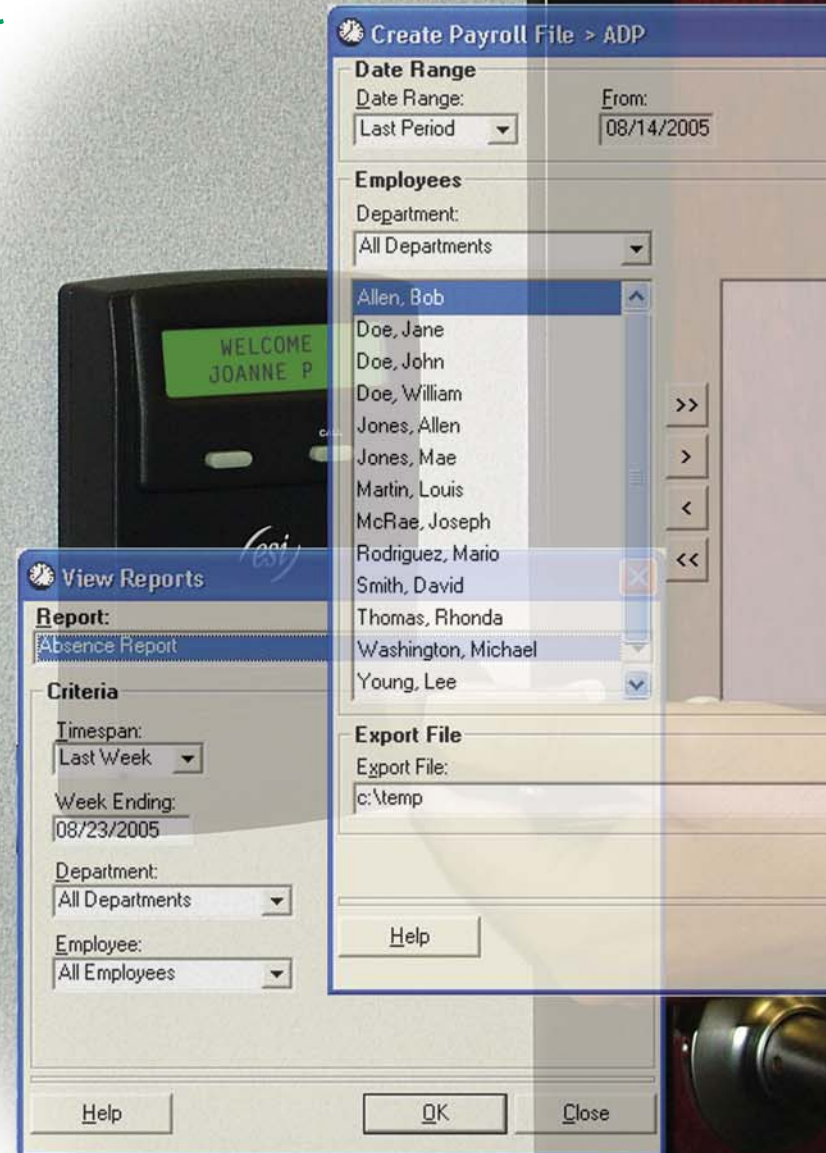
Tracking employees' time and attendance has always been a challenge. Keeping accurate paper records requires the time of both employees and management to validate and compile documents for payroll purposes.

Now, with *ESI TimeLine* for ESI Presence Management, you can gain control of your company's most precious asset: your employees' time.

Once your business deploys ESI's RFID-powered **ESI Presence Management®** on an ESI phone system, *ESI TimeLine* gives you the benefits of combining an automated time and tracking system with the proven technology of electronic employee cards and fobs.

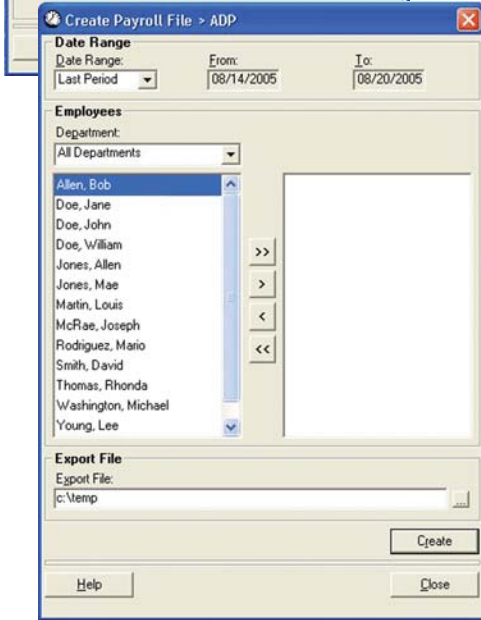
*ESI TimeLine* is ideal for companies wanting an easy-to-use time and attendance system at an attractive price. Use it to:

- **Streamline your payroll process.**
  - Eliminate time sheet collection.
  - End manual-entry errors.
  - Automate the entry of data into your payroll system (such as *QuickBooks®* and *ADP®*).
- **Create an accurate employee time-tracking system.**
  - Generate reports that quickly provide information about employee time.
  - Introduce a self-enforcing or compliance initiative for employee time.
  - Eliminate debate, manipulation, and misuse of a paper or “honor” system.
  - Give employees the ability to call up their “time cards” and verify information.



*We Make It Easy To Communicate*

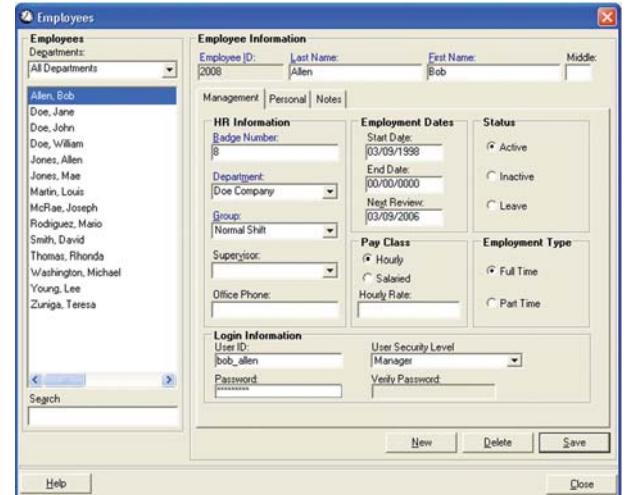
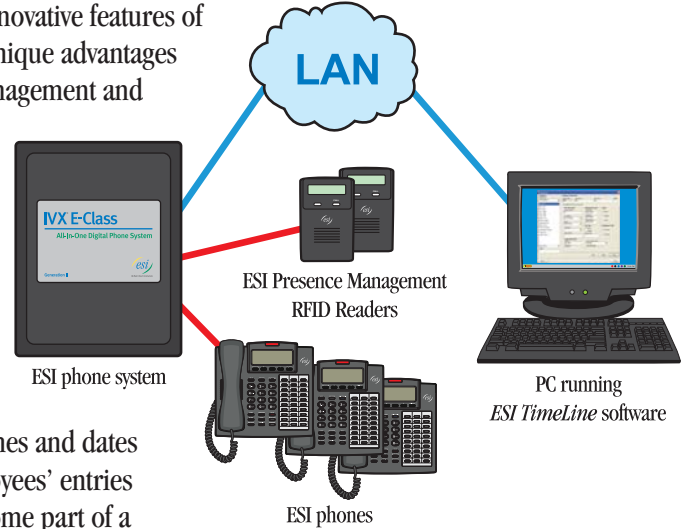
# How *ESI TimeLine* works for you.



*ESI TimeLine* combines the innovative features of ESI phone systems\*\* with the unique advantages of integrated ESI Presence Management and a robust software platform for employee time management.

When each employee waves his or her electronic key past an ESI Presence Management RFID Reader, the ESI phone system sends data to *ESI TimeLine*. Now, times and dates of all authorized employees' entries and exits instantly become part of a record you can save, print, and use with your payroll system.

With their many integrated features and ease-of-use, ESI phone systems greatly enhance your business communications. And only an ESI phone system with ESI Presence Management and *ESI TimeLine* can improve **both** your communications **and** your ability to manage employee time to your business's maximum benefit.



To learn more about ESI Presence Management and *ESI TimeLine*, consult your Certified ESI Reseller or visit [www.esiivx.com/presence](http://www.esiivx.com/presence).

*ESI Presence Management and ESI TimeLine work with the ESI-600, IVX® X-Class, IVX E-Class Generation II, and IVX S-Class Generation II phone systems.*

\* See the ESI Presence Management brochure, ESI document 0450-0812.

\*\* IVX system requires Network Services Processor (NSP) for LAN access to *ESI TimeLine*.  
(If your business uses ESI's VIP unified messaging application, your system already has an installed NSP.)