

Remote IP Feature Phone

for ESI's X-Class and E-Class phone systems

Be connected anywhere.

Now you can have a full-featured office extension almost anywhere! ESI's **Remote IP Feature Phone** is perfect for off-site employees, temporary field offices, departmental teleworkers, or executives working from home. With all the features and functions of in-office extensions, ESI's Remote Phone becomes your fully intelligent "anywhere extension."

Remote Phone users can easily conference, hold, and transfer calls to in-office extensions or even other Remote Phones connected to the system without the need for a phone system at the remote site. Remote Phones provide voice mail, call recording, station status, and all of the other advanced system features of ESI phones.

Inbound calls can be routed transparently to the Remote Phone (perfect for sales or service department workers located off-site). In-office co-workers can connect to the Remote Phone user as easily as to any other office extension. Not only does ESI's Remote IP Feature Phone make it easy to expand your business communications to wherever the workers may be, it also increases productivity and helps remote workers feel more like part of your team.



Take IP to greater lengths.

VoIP (Voice over Internet Protocol) technology converts traditional telephone voice communications into data to be carried over LANs, WANs, and the Internet, instead of phone lines. ESI's advanced IP platform uses your interoffice data pipeline as the communications path carrying both voice and data to your remote workers. With ESI's Remote Phone, your office extensions can "extend" to virtually any off-site location with broadband access such as DSL, cable modem, fiber-optical, or ISDN line.

Supported by the main office's ESI phone system, the remote locations require only a suitable high-speed data connection.* What previously could be achieved only with expensive dedicated phone lines now is possible through your WAN or Internet connection. Of course, you also avoid long-distance charges, since no phone lines are used between the Remote Phones and the main office phone system.



We Make It Easy To Communicate

New ways to work.

IP telephony and ESI innovations are changing the way business gets done. Here are a few of the many examples of how Remote Phones can extend your phone system and expand your business's effectiveness:

Off-site employees — Today's businesses require staffing and space flexibility, and ESI's Remote Phones give full office communications capabilities to employees working from home or very small branch offices. Remote Phone extensions, linked to the main office phone system via a high-speed connection, give off-site employees virtually the same extension features that their in-office co-workers enjoy. Now, being off-site doesn't have to mean being out of touch.

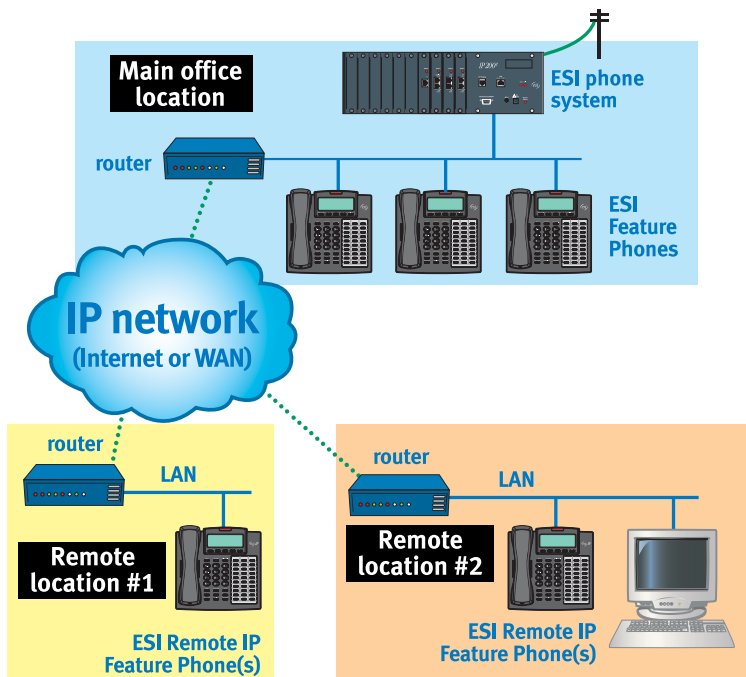
Executives' home offices — Now key executives can be at home and "at the office" at the same time. Much better than simple call-forwarding or off-premises extensions (OPX), ESI's Remote Phone provides call transfer, conferencing, station status and all the other functions of the in-office extensions. Using the Remote Phone extension is transparent to callers and other extensions. The home phone line isn't tied up and the data connection still carries data traffic* while Remote Phone conversations are taking place.

Group teleworkers — ESI's VoIP-compatible phone systems include fully-functional automatic call distribution (ACD). It manages incoming departmental calls, as with sales and service departments. Remote Phones allow ACD agents to be located virtually anywhere and still be transparently connected to callers, just as if the agents were physically located at the home office (especially valuable for meeting peak demand by tapping into the at-home workforce).

Temporary field offices — If your company periodically establishes temporary remote office locations with a data connection to the main office, now that same data pipeline can also carry your interoffice phone traffic. Simply program the Remote Phone and plug it into the field office's high-speed data connection, and you've got a fully-functional extension for as long as you need it. Down the street or hundreds of miles away, your field offices can be as accessible as the person in the next room.



ESI's Remote IP Feature Phones work with ESI's IVX® X-Class and E-Class (IVX/IP) phone systems.



Maximizing Remote IP Feature Phone performance.

ESI's Remote IP Phones connect via an external data pipeline, so the perceived quality of conversations sometimes will be affected by data transfer variables.

A high-speed Internet connection is likely to be the most cost-effective way to link the Remote Phone to the host system[™] located at the main office. However, the quality of some calls will vary due to routing and data traffic on the Internet. A WAN connection offers a better quality of service for the Remote Phone when cost-justified by other data requirements at the remote location.

Your local Remote Phone-Certified ESI Reseller will evaluate your Remote Phone applications, LAN/WAN options and other variables to recommend the provisioning that will provide you the best, most consistent quality of service at the lowest cost.

* Certain minimum high-speed connection and carrier standards required. See your Remote Phone-Certified ESI Reseller for specifications.

** IP E-Class with Remote Network Card, or IVX E-Class with Intelligent VoIP Card. The ESI-600 (www.esip.com/600) is not compatible with this phone but, rather, uses the IP Feature Phone II, which may be installed either locally or remotely.

Copyright © 2006 ESI (Estech Systems, Inc.). J/IX is a registered trademark of ESI. Other registered trade names mentioned herein are trademarks of their respective owners. ESI phone systems are protected by various U.S. Patents, granted and pending. ESI is an ISO 9001:2000-certified company. **Product details and features described herein are subject to change without notice.** Some features may not be available at initial release. More information on ESI and its products is available at www.esip.com.



For more details, visit www.esip.com/RemotePhone.

